

VTS EXAMINATION 2016 -17
PRELIMINARY QUESTION PAPER

Class : III

3

Register No :

Score : 200
Time : 2 hrs

General Instructions

1. Candidates are supplied with an OMR Answer Sheet.
2. Answer the questions in the OMR Sheet by shading the appropriate bubble.
3. Shade the bubbles with black ball point pen.
4. Each question carries four marks.
5. Use the space provided in the last page for rough work.

I. Read the following passage and answer the questions

Do you know the history of a pencil? The pencil's history is said to date back to 1564. People believe that once after a hurricane a lot of trees were uprooted in Britain. A farmer found a storage black substance under a tree. The farmer discovered that this substance would not wash off. He and other farmers began using the substance to mark their sheep. The substance they were using was called graphite. It is graphite inside the wooden casings of the pencils that we use today.

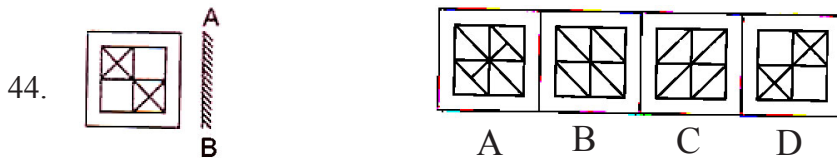
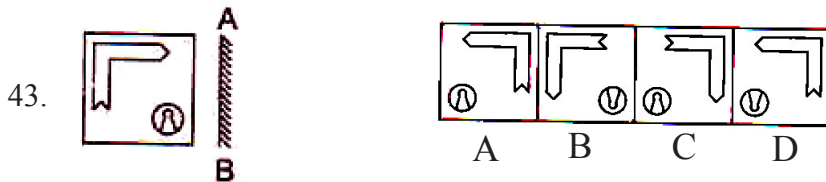
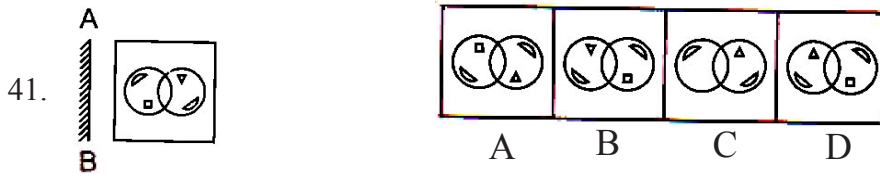
Pencils are identified by the numbers 1, 2 and 3. A number 1 pencil is soft and makes a very dark mark without applying much pressure. Teachers often request that students use a number 2 pencil. These pencils are more medium-soft. A number 3 pencil is very hard but not as dark. It's good for tracing. Whether we are using 1, 2 or 3 it is difficult to imagine a life without pencils.

1. According to the passage, what is inside the wooden pencil casings we use today ?
 - A. Lead
 - B. Graphite
 - C. Lead and clay
 - D. Graphite and clay
2. What do the different numbers on pencils mean?
 - A. How large the pencil is
 - B. How hard the graphite is
 - C. How much graphite is in the pencil
 - D. How hard the pencil wood is

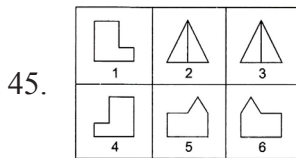
3. Which pencil is likely to make darker lines?
A. Number 1 B. Number 2
C. Number 3 D. Number 4
4. How old is pencil's history ?
A. Pencil's history dates back to 1664 B. Pencil's history dates back to 1554
C. Pencil's history dates back to 1564 D. Pencil's history dates back to 1574
5. Find out the abstract noun. I haven't given up hope
A. Hope B. Have
C. Given up D. I
6. Ramu a glass of water
A. Drink B. Drank
C. Drunk D. Drinking
7. he know how to cook well ?
A. Is B. Does
C. Have D. Has
8. How can you with this boy ?
A. Put up B. Put out
C. Put on D. Put off
9. Choose the word that rhymes with 'Beat'
A. Met B. Meet
C. Bet D. Set
10. Pick out the correctly spelt word
A. Poisonos B. Posonous
C. Poisonous D. Poisonus

19. A person who fits bulbs and taps
- A. Mechanic B. Lawyer
C. Priest D. Plumber
20. Everyone removes their shoes, before entering the house, this is the custom in your family.
When your friends come to your house.....
- A. They don't remove their shoes
B. Grandfather gets angry to them
C. Mother shouts at them
D. You will tell your friends at first to remove shoes before entering the house
21. The first Malayalam film star to become Lok Sabha MP is,
- A. K.B. Ganesh Kumar B. Innocent
C. Amitab Bachchan D. Mammooty
22. The speaker of Kerala Legislative Assembly who died in harness recently is,
- A. V. Viswanathan B. G. Karthikeyan
C. C.H. Muhammed Koya D. None of these
23. is the newly formed state of India.
- A. Andra Pradesh B. Telangana
C. Arunachal Pradesh D. Maharashtra
24. The Kerala State was formed on 1st November
- A. 1956 B. 1957
C. 1958 D. 1959
25. A specialist doctor who deals with skin is called
- A. Neurologist B. Dermatologist
C. Ophthalmologist D. Cardiologist

26. Who was the founder of Brahma Samaj ?
- A. Dayananda Saraswathi B. Raja Ram Mohan Roy
- C. Atmaram Pandurang D. Sree Narayana Guru
27. is the holy book of Sikhs
- A. Bhagavat Geetha B. Bible
- C. Angas D. Guru Granth Sahib
28. Which among the following is the 1st sports person to get Bharat Ratna ?
- A. Dhyan Chand B. Sourav Ganguly
- C. Rahul Dravid D. Sachin Tendulkar
29. The Home Rule league was started by
- A. M.K. Gandhi B. B.G. Tilak
- C. Ranade D. Nehru
30. Who is known as 'Kerala Gandhi' ?
- A. Dr. Rajendra Prasad B. K. Kelappan
- C. Baba Amte D. Harilal Gandhi
31. As Madhya Pradesh is related to Bhopal, Arunachal Pradesh is related to
- A. Dehradun B. Chennai
- C. Bangaluru D. Itanagar
32. Which among the following is known as the world's famous tallest brick minaret ?
- A. Qutub Minar B. Juma Masjid
- C. Red Fort D. Madurai Meenakshi Temple
33. Where is Eiffel Tower located ?
- A. Paris B. Milan
- C. London D. Berlin



Direction (45-50): In each of the following questions ,group the given figures into different classes on the basis of their orientation ,shape etc.

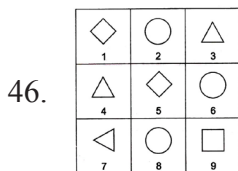


A. (1,4) , (2,3) , (5,6)

B. (1,5) , (2,6) , (4,3)

C. (1,6) , (2,3) , (4,5)

D. (1,2) , (3,6) , (4,5)

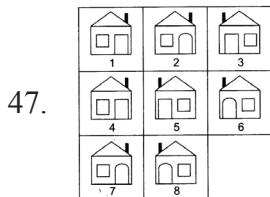


A. (1,5,9) , (2,4,7) , (3,6,8)

B. (2,6,8) , (1,5,9) , (3,4,7)

C. (4,3,7) , (2,6,9) , (1,5,8)

D. (1,2,3) , (4,5,6) , (7,8,9)

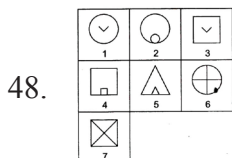


A. (1,7) , (2,4) , (3,5) , (6,8)

B. (1,4) , (2,7) , (3,5) , (6,8)

C. (1,3) , (2,7) , (6,8) , (4,5)

D. (1,4) , (3,6) , (3,5) , (7,8)

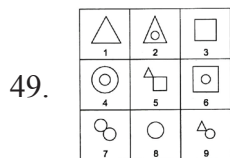


A. (1,2,6) , (3,4,7) , (5)

B. (1,3) , (2,6) , (4,5,7)

C. (1,2,6,7) , (3) , (4,5)

D. (1,3) , (2,4,5) , (6,7)

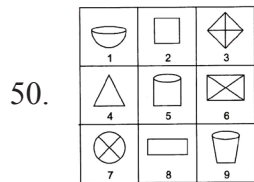


A. (4,7,9) , (2,5,8) , (1,3,6)

B. (1,3,8) , (2,4,6), (5,7,9)

C. (1,4,6) , (2,3,7) , (5,8,9)

D. (3,5,4) , (1,6,9), (2,7,8)



A. (1,5,9) , (3,6,7) , (2,4,8)

B. (2,3,6) , (4,8,9), (1,5,7)

C. (3,6,8) , (2,4,9) , (1,5,7)

D. (2,5,8) , (1,7,9), (3,4,6)

Space for rough works